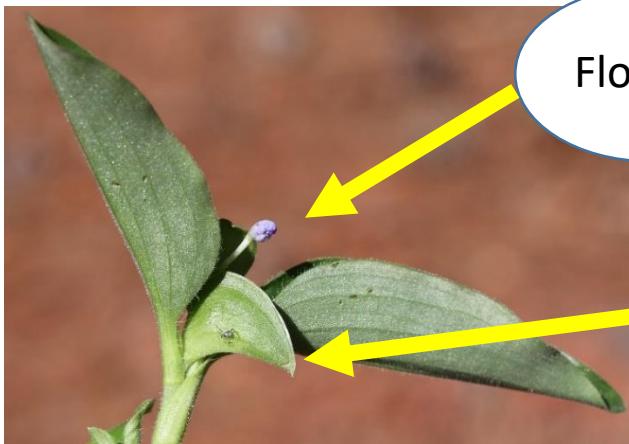
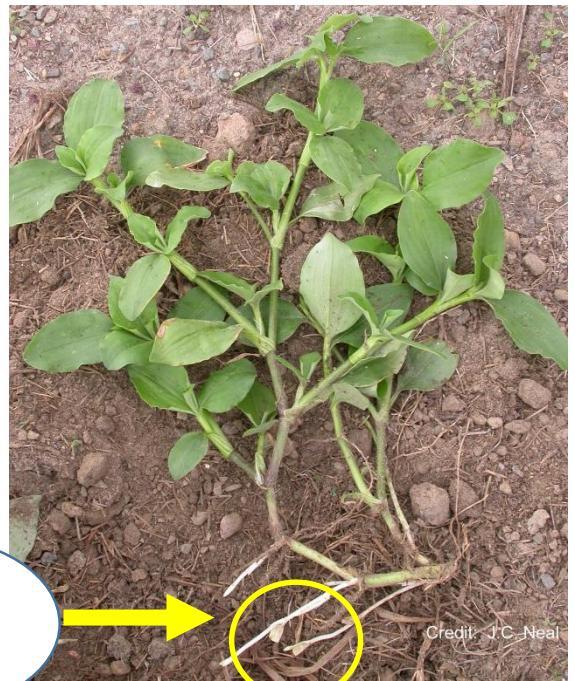


Have you seen this noxious weed?

Tropical spiderwort or Benghal dayflower (*Commelina benghalensis*) has recently been found in Triangle area (NC) landscapes. Thought to have been introduced in pine straw mulch. This is a noxious weed that should be eradicated before it can spread. If you think you have seen it, please contact the NC Department of Agriculture [Weed Regulatory Services](#) (919) 707-3741

Identifying characteristics: It looks much like other dayflowers (*Commelina* spp.) but has:

- Broad, egg-shaped leaves (leaves of other dayflower species are more narrow and taper to the tip)
- Spreading stems, rooting at the nodes.
- Subterranean flowers
- Above-ground flowers may be showy or inconspicuous
- Spathe is fused on two sides



Flowers

Fused spathe



Benghal dayflower



Spathe angular, fused on bottom and "back" (right side as pictured)



Flowers may be inconspicuous or somewhat showy

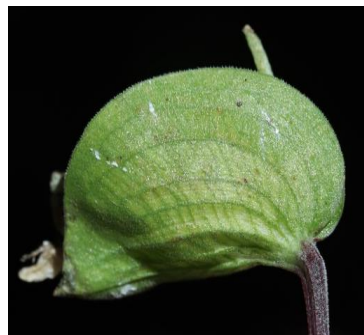


Broad, egg-shaped leaves; almost as wide as long



Rooting at the nodes, with underground flowers

Asiatic dayflower



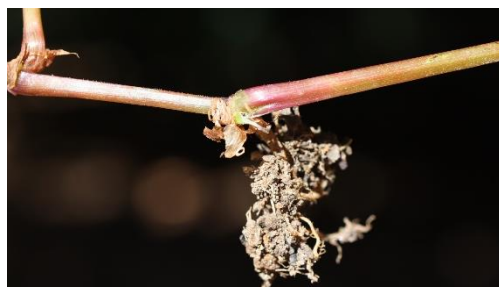
Spathe top rounded, fused only on bottom



Flowers showy



Leaves about 3x longer than wide; tapering to the tip



Rooting at the nodes, no underground flowers